

Gateway to Professional Recognitions

Programmes in Electrical, Electronic and Mechanical Engineering



Electrical, Electronic and Mechanical Engineering

Diploma in Professional Studies (Electrical)

Higher Diploma in Electrical and Electronics Engineering

BEng (Hons) Electronic and Electrical Engineering (Registration No.: 251350)*

BEng (Hons) Mechanical Engineering (Registration No.: 252537)*

Hong Kong College of Technology Centre of International Education

香港專業進修學校國際教育中心



Hong Kong College of Technology (HKCT) is a charitable and independent post-secondary education institution under the HKCT Group Limited. Formerly known as the Mongkok Workers' Night School, which was established in 1957, HKCT has striven continuously to contribute to the local education for over 50 years.

Hong Kong College of Technology International (HKCTI) is the operator of the programmes. Being a subsidiary set up by HKCT, HKCTI specializes in the operation of Undergraduate and Postgraduate degree programmes which are awarded by our overseas partner universities.

International Education (IE) is a branch under HKCT, which carries the missions of promoting life-long learning by providing top-notch academic programmes ranging from diploma to postgraduate degree from world class institutions to keep abreast with the dynamic changes of the world. Programme disciplines include Building Construction & Surveying, Civil Engineering, Electrical & Mechanical Engineering, Property & Facilities Management, Health, Safety and Environment, Business Administration, Accounting and Finance, Graphic Design, Tourism and Event Management, Information Technology and Beauty Services.

IE also collaborates with local professional bodies and overseas institutions to organize seminars and conferences to facilitate academic exchanges and sharpen competency of workforce, strengthen the territory's competitive edges to embrace dynamic changes brought by globalization.

Professional and academic services at IE include:

- Professional seminars and short courses;
- National and international conferences;
- Knowledge transfer between Hong Kong and overseas academics or professionals;
- Liaison with local/overseas institutions and professional bodies

Diploma in Professional Studies (Electrical)

專科文憑（電機）

Part-time 1 year

This programme admits students in September every year.

Accreditation  THE HONG KONG INSTITUTION OF INCORPORATED ENGINEERS
香港實業工程師學會
Registered in 1997

Introduction

This is a one-year part-time programme providing the foundation for further study to the degree level in the field of electrical and electronic engineering.

Professional Accreditation

This programme has been accredited by Hong Kong Institution of Incorporated Engineers (HKIE).

Teaching and Learning

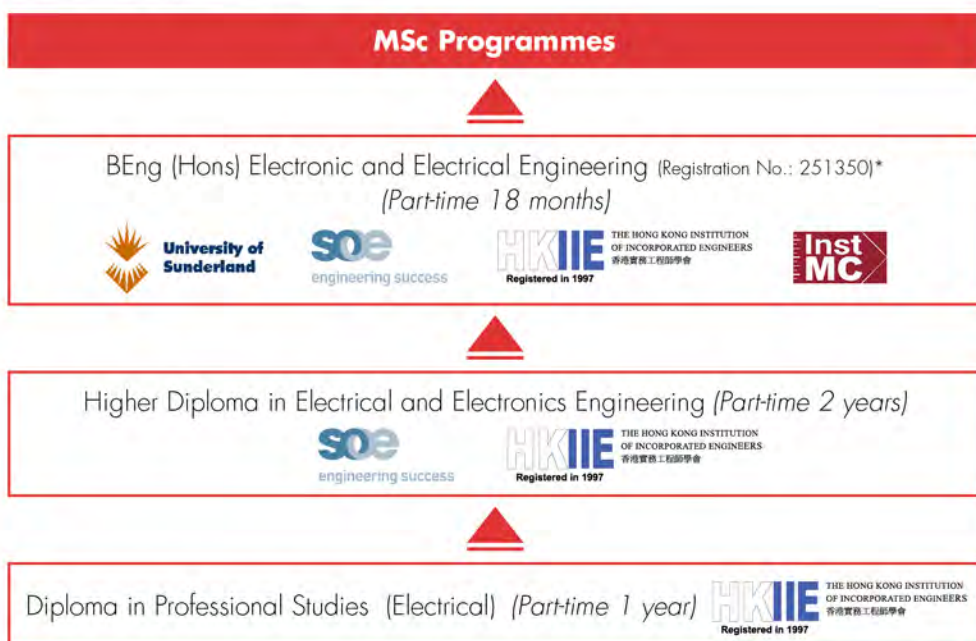
This programme consists of 6 modules. These modules are used to underpin students' numeracy and communication skills that would be beneficial for them to comprehend engineering theories, technical issues and relevant problems.

Entry Requirements

- Applicants should have completed Form 5 with a pass in Mathematics; or
- Applicants should be holders of Certificate in Electrical, Electronics or Building Services related discipline; or
- Mature entrants with relevant working experience.

Further Study

Graduates are eligible to apply for admission to Higher Diploma in Electrical and Electronics Engineering.



Programme Structure

Module ⁺	Commencement	Tuition Fee [^]
<ul style="list-style-type: none"> • Elementary Engineering Mathematics • Effective Use of English 	September (2 evenings)	HK\$5,600
<ul style="list-style-type: none"> • Electrical and Electronics Principles • Electrical Machines 	January (2 evenings)	HK\$5,600
<ul style="list-style-type: none"> • Advanced Electrical Principles • Electrical Power 	May (2 evenings)	HK\$5,600

⁺ Course content is subject to review and changes without prior notice.

[^] All tuition fees are subject to annual review and change without prior notice.



Higher Diploma in Electrical and Electronics Engineering

電機電子工程高級文憑

Part-time 2 years

This programme admits students in September every year.

Accreditations



Introduction

This is a two-year part-time programme providing professional knowledge and skills for further study to the degree level in the field of electrical and electronic engineering.

Professional Accreditation

This programme has been accredited by the Society of Operations Engineers (SOE), UK. Graduates who fulfil specified education and professional development requirements are eligible to apply for the Associate Member (AMSOE) of SOE, UK and may also achieve Engineering Council registration at Engineering Technicians (Eng Tech) level.

Programme Structure

This two-year part-time programme consists of fundamental theories and technologies for the industry, such as electrical circuit analysis, instrumentation and measurements, building services engineering, etc. The programme is divided into six semesters in a two-year duration. Students are required to complete two modules in each semester. Each module contains 36 face-to-face contact hours with lecturers.

Programme Structure (Year 1)

Module ⁺	Commencement	Tuition Fee [^]
• Engineering Mathematics I • Instrumentation and Measurements	September (2 evenings)	HK\$7,000
• Engineering Mathematics II • Electrical Circuit Analysis	January (2 evenings)	HK\$7,000
• Electrical Installation Technology • Building Services Engineering	May (2 evenings)	HK\$7,000

Programme Structure (Year 2)

Module ⁺	Commencement	Tuition Fee [^]
• Digital Systems and Microprocessor • Electronics Engineering	September (2 evenings)	HK\$7,000
• Electrical Power Systems • Power Electronics and Drives	January (2 evenings)	HK\$7,000
• Control Systems • Project	May (2 evenings)	HK\$7,000

⁺ Course content is subject to review and changes without prior notice.

[^] All tuition fees are subject to annual review and change without prior notice

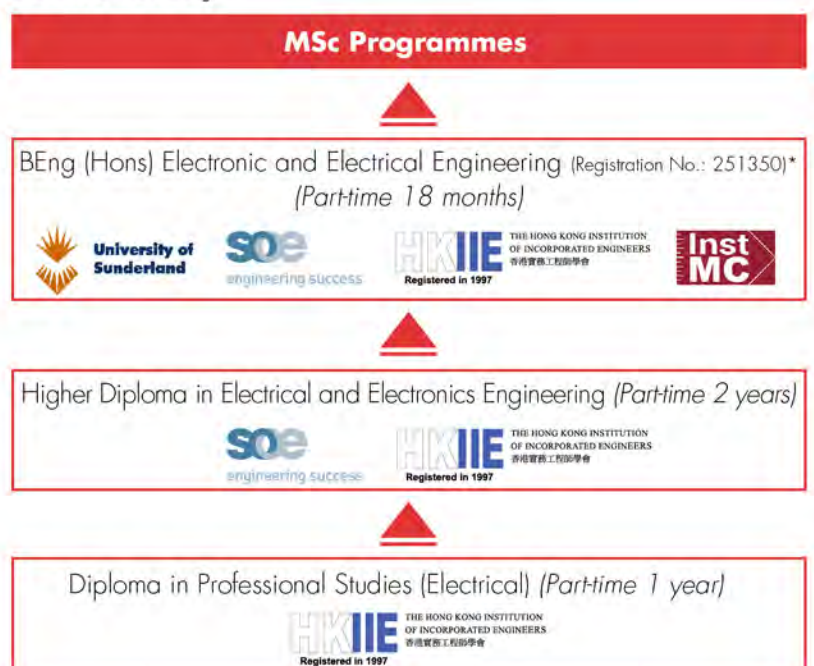
Entry Requirements

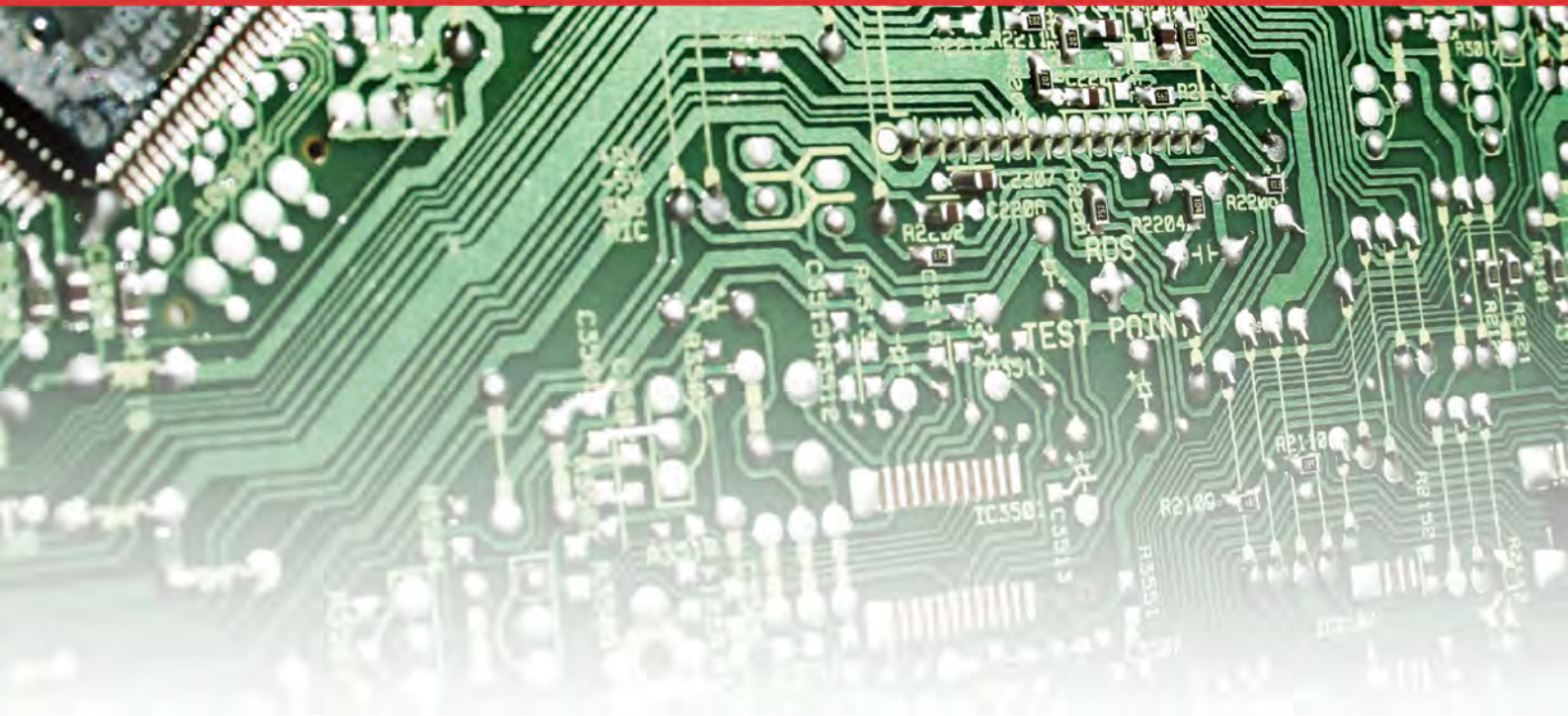
- Applicants should be holders of Diploma in Professional Studies (Electrical) awarded by HKCT or Diploma awarded by other institutions; or equivalent
- Mature entrants with relevant working experience.
- Applicants who are holders of higher certificate in Electrical, Electronic, or Building Services related disciplines, or equivalent may apply for Year 2.

Study Path

Graduates of this Higher Diploma programme are eligible to apply for admission into a 18-month top-up bachelor degree programme of BEng (Hons) Electronic and Electrical Engineering (Registration No.: 251350)* awarded by the University of Sunderland, UK.

Further Study





Part-time 18 months

This programme admits students in September every year.

Accreditations



Introduction

This 18-month part-time top-up bachelor degree programme provides the academic pathway for higher diploma holders in relevant disciplines to obtain higher level of qualification.

Professional Accreditation

This programme is conferred by the University of Sunderland, UK and has been accredited by the Society of Operations Engineers (SOE), UK and Institute of Measurement and Control (InstMC), UK. This programme has also been accredited by the Hong Kong Institution of Incorporated Engineers (HKIIE).

Graduates who fulfil the specified education and adequate working experience requirements are eligible to apply for Member of SOE, UK, InstMC, UK, and for Engineering Council EC (UK) registration at Incorporated Engineers (IEng) level.

The qualification is recognized by the Electrical and Mechanical Services Department (EMSD) as fulfilling the academic requirements for Grade C Registered Electrical Worker (REW).

Programme Structure⁺

The programme is a 18-month top-up bachelor degree for graduates of Higher Diploma in Electrical and Electronics Engineering or related disciplines. Students are required to complete 5 modules in 4 semesters.

- Electrical Power
- Professional Engineering Management Techniques
- Manufacturing Systems Design
- Electronic Systems Design
- Project

Entry Requirements

- Applicants should be holders of Higher Diploma in Electrical and Electronics Engineering awarded by HKCT; or
- Applicants should be holders of higher diploma in Electronic or Electrical or related disciplines awarded by local tertiary institutions or equivalent; and with relevant working experience; or
- Applicants who do not satisfy the above entry requirements may be admitted at the discretion of the University through an interview and assessment by a committee.
- Applicants may need to take bridging modules before the commencement of the programme.
- Applicants should possess a level of English proficiency fulfilling the University's requirement.

Mode of Learning

A full set of module materials is provided by the University of Sunderland, UK. Each module includes 45 face-to-face contact hours with local lecturers on weekday evenings and Saturdays.

Assessment

Modules are assessed in a combination of assignments, examinations and projects.

Tuition Fee[^]

HK\$75,000 in 4 instalments, each to be paid before the commencement of each semester.

Administration Fee[^]

HK\$1,500 (Upon 1st installment)

Study Path

BEng (Hons) Electronic and Electrical Engineering

(Registration No.: 251350)*

(Part-time 18 months)



Higher Diploma in Electrical and Electronics Engineering

(Part-time 2 years)



Diploma in Professional Studies

(Electrical) (Part-time 1 year)



+ Course content is subject to review and change without prior notice.

[^] All tuition fees are subject to annual review and change without prior notice.

* It is a matter of discretion for individual employers to recognize any qualification to which these courses may lead.

* This programme is operated by Hong Kong College of Technology International.



Part-time 18 months

This programme admits students in September every year.

Accreditations



Introduction

This 18-month part-time top-up bachelor degree programme provides the academic pathway for higher diploma holders in relevant disciplines to obtain higher level of qualification. The programme is conferred by the University of Sunderland, UK.

Professional Accreditation

This programme is conferred by the University of Sunderland UK and has been accredited by the Society of Operations Engineers (SOE), UK and Institute of Measurement and Control (InstMC), UK and meets the required academic criteria for registration as an Incorporated Engineer (IEng).

Programme Structure⁺

The programme is a 18-month top-up bachelor degree for graduates of higher diploma in Mechanical Engineering or related disciplines. Students are required to complete 5 modules in 4 semesters:

- Engineering Dynamics & Thermofluids
- Professional Engineering Management Techniques
- Manufacturing Systems Design
- Mechanical Design & Materials Selection
- Project

Entry Requirements

- Applicants should be holders of higher diploma in Mechanical Engineering or related disciplines awarded by local tertiary institutions or equivalent; and substantial relevant working experience; or
- Applicants who do not satisfy the above entry requirements may be admitted at the discretion of the University through an interview and assessment by a committee.
- Applicants should possess English proficiency fulfilling the University's requirement.

Mode of Learning

A full set of module materials is provided by the University of Sunderland, UK. Each module includes 45 face-to-face contact hours with local lecturers on weekday evenings and Saturdays.

Assessment

Modules are assessed in a combination of assignments, examinations and projects.

Tuition Fee[^]

HK\$75,000 in 4 instalments, each to be paid before the commencement of each semester.

Administration Fee[^]

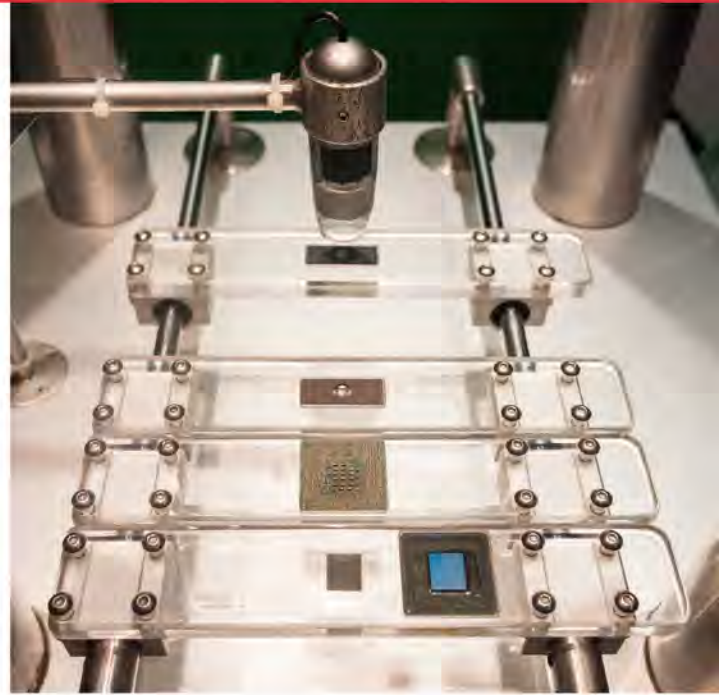
HK\$1,500 (Upon 1st installment)

⁺ Course content is subject to review and change without prior notice.

[^] All tuition fees are subject to annual review and change without prior notice.

* It is a matter of discretion for individual employers to recognize any qualification to which these courses may lead.

* This programme is operated by Hong Kong College of Technology International.



Commencement Date : Every September
Lecture Time : 7:00 pm – 10:00 pm
Lecture Venue : HKCT Ho Ma Tin Campus
Application Fee : \$120 non-refundable
Application Enquiries : 2276 8514 / 2926 1222
Online application : www.hkct.edu.hk/u-choice

Campus:

HKCT Ho Man Tin Campus: 14 Princess Margaret Road, Ho Man Tin, Kowloon

* It is a matter of discretion for individual employers to recognize any qualification to which these courses may lead.

* This programme is operated by Hong Kong College of Technology International.