



University of
Lancashire



港專

Programmes in the Built Environment

Gateway to Professional Recognitions

Professional Diploma to Master's Degree for Secondary School Leavers & Industrial Practitioners



Construction and Facilities Management

MSc Construction Project Management*
(Registration Number: 252849)

BSc (Hons) Construction Project Management*
(Registration Number: 251152)

BSc (Hons) Facilities Management*
(Registration Number: 250793)

Professional Diploma in Building Technology



Content

MSc Construction Project Management* _____ Page 4-5

(Registration Number: 252849)

BSc (Hons) Construction Project Management* _____ Page 6-7

(Registration Number: 251152)

BSc (Hons) Facilities Management* _____ Page 8-9

(Registration Number: 250793)

Professional Diploma in Building Technology _____ Page 10-11



Hong Kong College of Technology

Hong Kong College of Technology (HKCT) is a charitable and independent post-secondary education institution under the HKCT Group Limited. Formerly known as the Mongkok Workers' Night School, which was established in 1947, HKCT has continuously striven to provide professional and vocational education for over 75 years.

HKCT carries the mission of promoting continuing professional development by providing various academic-based learning, ranging from Micro-courses, Diploma and Professional Diploma programmes to Bachelor's and Master's Degrees, in collaboration with universities and professional institutions to keep abreast with the dynamic changes of the world. Programme disciplines include Building and Construction, Facilities Management, Civil Engineering, Electrical and Mechanical Engineering, Property Management, Graphic Design, and Beauty Services.

HKCT also collaborates with professional associations and institutions to organise seminars and conferences to facilitate academic exchanges and sharpen competency of workforce, strengthen the territory's competitive edges to embrace dynamic changes brought by globalisation.

Professional and academic services at HKCT include:

- Professional seminars and short courses;
- National and international conferences;
- Knowledge transfer between Hong Kong and overseas academics or professionals;
- Liaison with local/overseas institutions and professional associations.

* It is a matter of discretion for individual employers to recognize any qualification to which this course may lead. MSc Construction Project Management, BSc (Hons) Construction Project Management and BSc (Hons) Facilities Management programmes are operated by Hong Kong College of Technology International Limited and awarded by the University of Lancashire, UK.

Student Sharing and Activities



Students visited the Innovation Hub (iHub) to learn about the latest advancements in construction technology.



Safety Experience Training to enhance the safety awareness of construction students



吳偉雄 Henry Ng
設施管理(榮譽)理學士畢業生
Graduate of BSc (Hons) Facilities Management

"The programme covers various areas such as facilities management, maintenance management, construction law, and more. Additionally, it includes content related to big data and artificial intelligence. The lecturers are all industry professionals, will utilize their extensive working experience as part of the classroom content. This approach will broaden my perspective on related work and enable me to apply what I have learned in my future endeavors."



曾煜華 Michael Tsang
建造工程項目管理(榮譽)理學士畢業生
屋宇建造高級文憑畢業生
Graduate of BSc (Hons) Construction Project Management
Graduate of Higher Diploma in Building Technology

"Reflecting on my BSc (Hons) Construction Project Management at the University of Lancashire and the Hong Kong College of Technology, I am grateful for this significant milestone. My studies facilitated a smooth transition to advanced topics, enhancing my engineering judgment and building valuable connections. The comprehensive course content improved my knowledge and was invaluable in my work. Guided by instructors, I mastered skills in data collection, analysis, and drawing conclusions, all directly applicable to my profession. The ability to translate theoretical knowledge into practical application is my most valuable takeaway, instilling confidence for my future career."



Part-time: Minimum 2 years

This programme admits students every year in September, January and May.

Introduction

This programme seeks to develop the skills of postgraduate managers and engineers in the following areas:

- Enable graduates in management and engineering disciplines to develop their project management skills.
- Focus upon project planning and control methods within the construction project management process.
- Extend knowledge of innovative tools, techniques and methodologies in the resolution of complex problems.
- Develop personal, interpersonal and project-personnel skills.
- Provide the opportunity for students to complete a range of modules that are relevant to their working environment and general interest in the context of international project management.
- Develop the student's research methods and applications.

The programme comprises a total of nine modules including triple module on dissertation which is the final phase of study and promotes philosophical approaches to research and investigation. Students can select their own research focus for the dissertation and this commonly relates to topic areas that are both of personal interest and helpful for career development.

Professional Recognition



This programme is accredited by **Chartered Institute of Building, UK (CIOB)** and **Chartered Association of Building Engineers (CABE)** and **Association for Project Management (APM)**. Graduates who fulfil specified education and professional development requirements are eligible to apply for Membership of CIOB, CABE and APM.

Programme Structure (Year 1)

- Health and Safety Management
- Project Team and Leadership Development
- Strategic Project Management
- Project Planning, Control and Analysis
- Risk and Value Management
- Advanced Construction Technology and Sustainability

Programme Structure (Year 2)

- Master's Dissertation (triple module)

Entry Requirements

- Applicants should either have at least a bachelor's degree in building construction related discipline with evidence of industry experience or have equivalent experience or training, normally from within the work environment. The previous degree should have been completed in English.
- Any applicants not meeting the standard entry requirements will be considered via the University recognition of prior learning (RPL) process.

Tuition Fee[^]

HK\$96,760 in 4 instalments

Administration Fee

HK\$1,720 Paid upon 1st instalment

[^] All tuition fees are subject to annual review and change without prior notice.

^{*} It is a matter of discretion for individual employers to recognize any qualification to which this course may lead. MSc Construction Project Management is operated by Hong Kong College of Technology International Limited and awarded by the University of Lancashire, UK.



Part-time: Minimum 15 months

This programme admits students every year in September, January and May.

Introduction

This part-time programme which is conferred by the University of Lancashire, UK, has been launched since 2004. It includes the study of quality management system, project management skills in application to the design and construction of buildings, the study of health and safety management in application to the construction process. The programme comprises three basic major components:

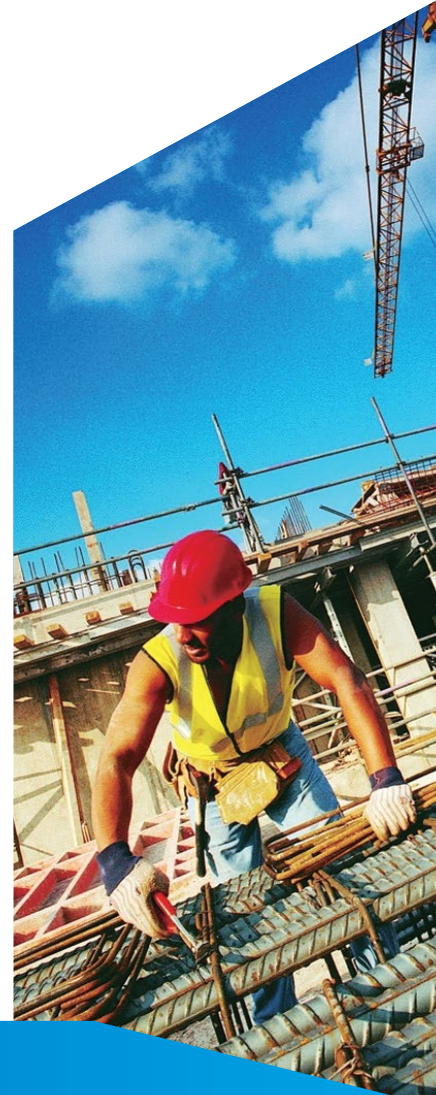
- The technology of construction.
- The management and organisation of resources.
- The legal framework set by society relating to contract, safety and environment.

Professional Recognition



工程監督及建設監理學會(香港)
The Institute of Clerks of Works
and Construction Inspectorate (Hong Kong)

- This programme is accredited by **Royal Institution of Chartered Surveyors (RICS)**, **The Chartered Institute of Building, UK (CIOB)**, **Chartered Association of Building Engineers (CABE)** and **The Institute of Clerks of Works, UK (ICWCI)**. Graduates who fulfil the specified education and adequate working experience requirements are eligible to apply for the Membership of RICS, CIOB, CABE and ICWCI.
- This programme is also accredited by **Hong Kong Institute of Construction Managers (HKICM)**, **The Hong Kong Institute of Clerks of Works (HKICW)** and **Hong Kong Institution of Incorporated Engineers (HKIIE)**. Graduates who fulfill specified education and professional development requirements are eligible to apply for Membership of HKICM, HKICW and HKIIE.



Programme Structure

Students have to complete 6 taught modules and a dissertation in 4 semesters, the minimum length of study is 15 months and maximum length of study is 30 months.

Assessment

Coursework (50%) and Examination (50%) or Coursework/Examination (100%)

Dissertation

Initial Research Report (10%), Poster Presentation (10%) and Final Report (80%)

Mode of Delivery

Each taught module consists of 24 or 36 face-to-face contact hours, including lectures and tutorials.

Semester One

- Project Management & BIM
- Project Analysis and Appraisal

Semester Two

- Performance Studies
- Health and Safety Management
- Dissertation (Part I)

Semester Three

- Construction Law
- Business and Entrepreneurship
- Dissertation (Part II)

Semester Four

- Dissertation (Part III)
(Dissertation is supported by two supplementary modules including "Communication & Research Methods" and "Information Technology Skills")

Entry Requirements

- Applicants should be holders of Professional Diploma in Building Technology awarded by HKCT with relevant industrial experience; or
- Holders of Higher Diploma/ Associate Degree/ Higher Certificate in Building Studies/ Facilities Management/ Estate Management/ Surveying or related discipline from local recognised institutions, with relevant industrial experience.
- Applicants should possess English proficiency level up to IELTS 6 or a pass in HKCT English Test or English as medium of instruction in previous postsecondary study or HKDSE English: Level 3 at Category A English language or equivalent, or
- Applicants should possess English Proficiency fulfilling the University's requirement.
- Applicants who do not satisfy the above academic entry requirement may be admitted at the discretion of the University.

Tuition Fee[^]

HK\$77,620 in 4 instalments

Administration Fee

HK\$1,720 Paid upon 1st instalment

Articulation Pathway

MSc Construction Project Management* (Registration Number: 252849) (Part-time minimum 2 years)



BSc (Hons) Construction Project Management*

(Registration Number: 251152)

(Part-time minimum 15 months)



工程監督及建設監理學會 (香港)
The Institute of Clerks of Works
and Construction Inspectorate (Hong Kong)



Professional Diploma in Building Technology

(Part-time 2 years)



工程監督及建設監理學會 (香港)
The Institute of Clerks of Works
and Construction Inspectorate (Hong Kong)

[^] All tuition fees are subject to annual review and change without prior notice.

* It is a matter of discretion for individual employers to recognize any qualification to which this course may lead. BSc (Hons) Construction Project Management is operated by Hong Kong College of Technology International Limited and awarded by the University of Lancashire, UK.

Part-time: Minimum 15 months

This programme admits students every year in September, January and May.

Introduction

This part-time programme which is conferred by the University of Lancashire, UK, has been launched since 2001. It covers a wide range of estates related aspects of sustainable business in order to support the core activities of an enterprise, including building and estates development, maintenance management and building services provision and control. The concept of sustainability has been incorporated in most of the modules in the restoration of our environment.

Professional Recognition



- This programme is accredited by **Royal Institution of Chartered Surveyors (RICS)**, **The Chartered Institute of Building, UK (CIOB)**, **Chartered Association of Building Engineers (CABE)**, **The Institute of Clerks of Works, UK (ICWCI)** and **Building Services Operation and Maintenance Executives Society (BSOMES)**. Graduates who fulfil the specified education with adequate working experience requirements are eligible to apply for the Membership of RICS, CIOB, CABE, ICWCI and BSOMES.
- This programme is also accredited by **The Hong Kong Institute of Clerks of Works (HKICW)**, **Hong Kong Institution of Incorporated Engineers (HKIIE)** and **Hong Kong Institute of Certified Property Managers (HKCPM)**. Graduates who fulfil specified education and professional development requirements are eligible for applying for Membership of HKICW, HKIIE and HKCPM.

Programme Structure

Students have to complete 6 taught modules and a dissertation in 4 semesters, the minimum length of study is 15 months and maximum length of study is 30 months.

Assessment

Coursework (50%) and Examination (50%) or Coursework/Examination (100%)

Dissertation

Initial Research Report (10%), Poster Presentation (10%) and Final Report (80%)

Mode of Delivery

Each taught module consists of 24 or 36 face-to-face contact hours, including lectures and tutorials.

Semester One

- Facilities Management
- Project Analysis and Appraisal

Semester Two

- Maintenance Management
- Health and Safety Management or Building Conservation
- Dissertation (Part I)

Semester Three

- Construction Law
- Business and Entrepreneurship
- Dissertation (Part II)

Semester Four

- Dissertation (Part III)

(Dissertation is supported by two supplementary modules including "Communication & Research Methods" and "Information Technology Skills")

Entry Requirements

- Applicants should be holders of Professional Diploma in Building Technology awarded by HKCT with relevant industrial experience; or
- Holders of Higher Diploma/ Associate Degree/ Higher Certificate in Building Studies/ Facilities Management/ Estate Management/ Surveying or related discipline from local recognised institutions, with relevant industrial experience.
- Applicants should possess English proficiency level up to IELTS 6 or a pass in HKCT English Test or English as medium of instruction in previous postsecondary study or HKDSE English: Level 3 at Category A English language or equivalent, or
- Applicants should possess English Proficiency fulfilling the University's requirement.
- Applicants who do not satisfy the above academic entry requirement may be admitted at the discretion of the University.

Tuition Fee[^]

HK\$78,280 in 4 instalments

Administration Fee

HK\$1,720 Paid upon 1st instalment

Articulation Pathway

MSc Construction Project Management* (Registration Number: 252849) (Part-time minimum 2 years)



BSc (Hons) Facilities Management* (Registration Number: 250793) (Part-time minimum 15 months)



工程監督及建設監理學會 (香港)
The Institute of Clerks of Works
and Construction Inspectorate (Hong Kong)



Professional Diploma in Building Technology (Part-time 2 years)



工程監督及建設監理學會 (香港)
The Institute of Clerks of Works
and Construction Inspectorate (Hong Kong)

[^] All tuition fees are subject to annual review and change without prior notice.

* It is a matter of discretion for individual employers to recognize any qualification to which this course may lead. BSc (Hons) Facilities Management is operated by Hong Kong College of Technology International Limited and awarded by the University of Lancashire, UK.

Part-time: 2 Years

This programme admits students in September, January and May every year.

Introduction

Professional Diploma in Building Technology is a two-year part-time programme providing academic pathway in relevant disciplines to obtain higher level of qualification.

Professional Recognition



- This part-time programme is accredited by **Chartered Association of Building Engineers (CABE)** and **Hong Kong Institute of Construction Managers (HKICM)**. Graduates who fulfil the specified education with adequate working experience requirements are eligible to apply for Student or Associate Membership of CABE and HKICM.
- This programme is also accredited by **The Institute of Clerks of Works, UK (ICWCI)**, **The Institute of Clerks of Works, Hong Kong (HKICW)**. Graduates who fulfil relevant working experience are eligible to apply for Membership of ICWCI and HKICW.

Entry Requirements

- Applicants should be holders of Ordinary Certificate or Diploma in Building related disciplines; or
- Mature entrants aged 21 or above and have relevant working experience.
- Holders of Higher Certificate in Building-related disciplines; or Advanced Course for Clerks of Works or Mature Entrants Course for Clerks of Works; or equivalent may apply for admission into Year 2.



Programme Structure (Year 1)

Module	Commencement	Tuition Fee [^]
<ul style="list-style-type: none"> Elementary Construction Technology and Design Studies Construction Materials and Environmental Science 	September	HK\$7,800
<ul style="list-style-type: none"> Business Environment Site Surveying Structural Mechanics 	January	HK\$7,800
<ul style="list-style-type: none"> Information & Decision Making Management Pre-contract Studies 	May	HK\$7,800

Programme Structure (Year 2)

Module	Commencement	Tuition Fee [^]
<ul style="list-style-type: none"> Sustainable Construction Legal Studies Economics and Financial Management 	September	HK\$7,800
<ul style="list-style-type: none"> Building Design Services and Environment Health and Safety Studies English Communication Skills 	January	HK\$7,800
<ul style="list-style-type: none"> Professional Practice & Project Business Environment II 	May	HK\$7,800
Elective modules:		
<ul style="list-style-type: none"> Construction Management or Contract Administration or Building Maintenance and Adaptation or Building Inspection and Maintenance Technology 		

[^] All tuition fees are subject to annual review and change without prior notice.

Mode of Delivery

The course is divided into six semesters in a 2-year duration and students are required to take two to three modules in each semester. Students have to complete all six semesters and each module consists of 22-33 face-to-face contact hours with lecturers.

Articulation Pathway

MSc Construction Project Management* (Registration Number: 252849) (Part-time minimum 2 years)



BSc (Hons) Construction Project Management*

(Registration Number: 251152)

(Part-time minimum 15 months)



工程監督及建設監理學會 (香港)
The Institute of Clerks of Works
and Construction Inspectorate (Hong Kong)



BSc (Hons) Facilities Management*

(Registration Number: 250793)

(Part-time minimum 15 months)



工程監督及建設監理學會 (香港)
The Institute of Clerks of Works
and Construction Inspectorate (Hong Kong)



Professional Diploma in Building Technology

(Part-time 2 years)



工程監督及建設監理學會 (香港)
The Institute of Clerks of Works
and Construction Inspectorate (Hong Kong)

* It is a matter of discretion for individual employers to recognize any qualification to which this course may lead. MSc Construction Project Management, BSc (Hons) Construction Project Management and BSc (Hons) Facilities Management programmes are operated by Hong Kong College of Technology International Limited and awarded by the University of Lancashire, UK.

Financial Assistance

HKCT Alumni Fee Reduction[#]

- Applicants who have graduated from the Centre of International Education of HKCT (CIE) and have successfully completed a one-year or longer programme within the past 3 academic years, and who have successfully enrolled in a higher-level programme provided by CIE are eligible for this benefit.
- Up to 4% of the total tuition fee reduction for the higher-level programme will be deducted from the final instalment of the tuition payment.

Early Bird Discount[#]

- Applicants who complete the application procedure for the September intake on or before 31 July / the January intake on or before 30 November each year, are eligible for a tuition fee reduction of up to HK\$2,000, which will be deducted from the final instalment of the tuition payment.

[#] Applicants are eligible for either one of HKCT Alumni Fee Reduction or Early Bird Discount. In the event of any dispute, the decision of HKCT shall be final.

Lecture Venue	: HKCT Mong Kok East Campus HKCT Jordan Learning Centre
Application Enquiries	: 2276 8514 / 2926 1222
Website	: https://www.hkct.edu.hk/cie
Online application	: https://www.hkct.edu.hk/uchoice

Programme Details



Application



Campus:

HKCT Mong Kok East Campus: 14 Princess Margaret Road, Ho Man Tin, Kowloon

HKCT Jordan Learning Centre: 11/F, Wing On Kowloon Centre, 345 Nathan Road, Kowloon

* It is a matter of discretion for individual employers to recognize any qualification to which this course may lead. MSc Construction Project Management, BSc (Hons) Construction Project Management and BSc (Hons) Facilities Management programmes are operated by Hong Kong College of Technology International Limited and awarded by the University of Lancashire, UK.